

# „Bunny bag Benni“



eBook from [stephankie-dreams.com](http://stephankie-dreams.com)



Sewing instructions, pattern,  
and files in the formats dxf, svg, png and jpeg

Copyright for the "Bunny bag Benni" by Stephanie Müller, Stephankie-Dreams, January 2025.  
Items sewn from this pattern may be sold without quantity restrictions, provided that the author of the pattern ("Bunny bag Benni" by Stephankie-Dreams) is credited in the product description. Mass production, publication of the eBook, or any parts thereof is expressly prohibited.

## contens

|                                       |    |
|---------------------------------------|----|
| important links .....                 | 3  |
| who is behind Stephankie-Dreams ..... | 4  |
| Bunny bag Benni .....                 | 5  |
| sewing terms .....                    | 6  |
| instructions for printing .....       | 8  |
| required materials .....              | 10 |
| material consumption .....            | 11 |
| sewing instructions bunny bag .....   | 12 |
| sewing pattern .....                  | 23 |

*Stephankie-Dreams*

No liability is assumed for any errors in the instructions

## important links

Thank you for choosing an eBook from *Stephankie-Dreams*.

*Stephankie-Dreams* eBooks contain many pictures and are described in great detail, so even beginners can achieve beautiful sewing results with these instructions.

Every idea that comes to my mind is lovingly developed by hand, thoroughly tested, and repeatedly sewn until everything fits perfectly.

I am happy to answer your wishes and questions about sewing at

[info@stephankie-dreams.de](mailto:info@stephankie-dreams.de)

You can find all the news on Facebook ( [Stephankie-Dreams](#) )  
and on Instagram ( [#stephankiedreamsde](#) )

*Stephankie-Dreams*

No liability is assumed for any errors in the instructions

## Who is behind Stephankie-Dreams



Many years ago, creating patterns was not even a consideration. I've always enjoyed being creative. Slowly but surely, I continued to develop my skills. During my first training, I came into contact with a sewing machine for the first time and found pleasure in using it. My first attempts were homemade carnival costumes for my two children. They had such unique requests that I simply had to take matters into my own hands. But it was only years later, when I held a piece of jersey fabric in my hands, that I fell head over heels in love with this material. Jersey is so versatile and so comfortable to wear.

So, I began sewing everyday clothing for the children in my family. I enjoyed it so much that I started to build my company, Stephankie-Dreams, to sell handcrafted products. With every piece I produced, I learned more and more, and new ideas for products kept popping into my head, which I put on paper and brought to life. Eventually, I wanted to share my experiences and ideas with others and began creating my own patterns.

With eBooks from Stephankie-Dreams, I now want to reach many people who want to learn the craft of sewing. I hope that it sparks a passion for sewing in some, as the joy of every handmade piece is indescribable.

So now, I wish you all a lot of fun and success in sewing.

*Yours, Stephanie*

*Stephankie-Dreams*

No liability is assumed for any errors in the instructions

## Bunny bag Benni

Easter time is gift time! Small surprises are often hidden and eagerly searched for by the recipient. The bunny pouch Benni is perfect for storing little treats like sweets or small gifts. Plus, it looks adorable in the grass.

The pouch measures approximately 7,87 x 7,48 in and is closed at the back with a drawstring. The ears add an extra 4,72 in length. Benni's face comes as a cutting file.

The bunny pouch is sewn from cotton fabrics.

Sewn pieces made from this pattern may be sold without any quantity restrictions.

The author of the pattern ('Bunny bag Benni' by Stephankie-Dreams) must be credited in the description text. Mass production, publication of the eBook, or sharing any parts of it is expressly prohibited.



*Stephankie-Dreams*

No liability is assumed for any errors in the instructions

## sewing terms

**seam allowance** = When cutting pattern pieces, a seam allowance of approximately 3/8 in is often added. This ensures that the garment will not be tighter than it should be when sewn.

**trim seam allowance** = This refers to trimming the seam allowance after sewing. This makes the seams flatter.

**to clip** = For corners or curves, small notches are made in the seam allowance after sewing, so that the seam lies flat and the corner can be properly pushed out after turning.

**seam lock** = To prevent the seam from coming undone, a few stitches must be sewn forward and backward at the beginning and end of each seam.

**right fabric side** = The right side of the fabric is the more attractive side and should be used as the outer side.

**left fabric side** = The left side should be used as the inner fabric side. It is the less attractive side of the fabric.

**grainline** = This refers to the fabric grainline that must be observed when cutting pattern pieces.

**presser foot width** = The fabric is guided along the edge of the presser foot during sewing.

**apply** = Sew on appliqués using a zigzag stitch (stitch width 3.5 and stitch length 0.9). Use thread that matches each appliqué's color.

**edgestitch** = Here, sew close to the edge of the fabric.

**running stitch** = Here, sew over an edge to additionally stabilize it.

**curl** = The creation of gathers.

**right sides together** = Here, two pattern pieces are placed together with the right sides facing each other. The less attractive side is therefore on the outside.

*Stephankie-Dreams*

No liability is assumed for any errors in the instructions

**finish** = Here, a zigzag stitch is used to sew over the fabric edges to prevent fraying and/or to sew them together at the same time.

**fold** = The pattern is placed once with the writing facing up on the fabric, and once mirrored along the fold edge on the fabric.

Please read the instructions carefully before you start sewing, as this will answer most questions in advance.

*A seam allowance of 0,28 in is already included in the pattern.*

Unless otherwise stated, always sew with a presser foot width.

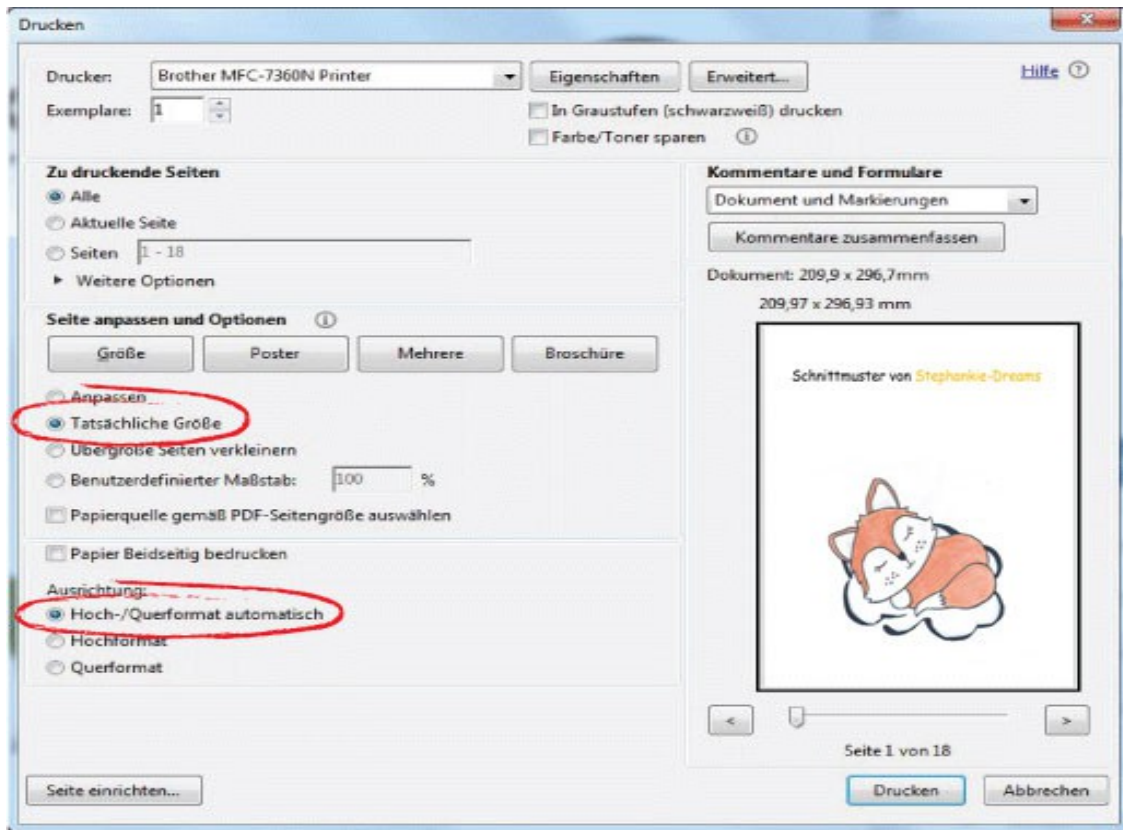
*Stephankie-Dreams*

No liability is assumed for any errors in the instructions

## instructions for printing

### tip:

Print only the pattern in black and white to save costs and be environmentally friendly. The instructions are easy to read on screen.



The following print settings must be configured:

### Pages to print:

Select the Pages setting and enter the specific page numbers you need in the designated field.

### Size:

Choose Actual Size.

### Orientation:

Select Automatic Portrait/Landscape.

*Stephankie-Dreams*

No liability is assumed for any errors in the instructions



## required materials



- sewing machine
- needle universal
- zipper foot
- iron
- scissors, pins or fabric clips, pen
- eyelet pliers
- pattern
- thread in various colors, matching the selected fabrics
- plotter

*Stephankie~Dreams*

No liability is assumed for any errors in the instructions

## material consumption

| material                           | consumption        |
|------------------------------------|--------------------|
| fabric for outside                 | ca. 21 x 16 in     |
| fabric for inside                  | ca. 21 x 10 in     |
| fabric for ear inside              | ca. 6 x 5 in       |
| Decovil Light                      | ca. 6,5 x 6,5 in   |
| fusible interfacing Vliesline H250 | ca. 6 x 5 in       |
| eyelets diameter 0,16 in           | 2 piece            |
| cord                               | ca. 25,6 in length |
| flex film black                    | ca. 6 x 5 in       |
| flex film white                    | ca. 4 x 4 in       |
| flex film for nose                 | ca. 3,5 x 2,5 in   |

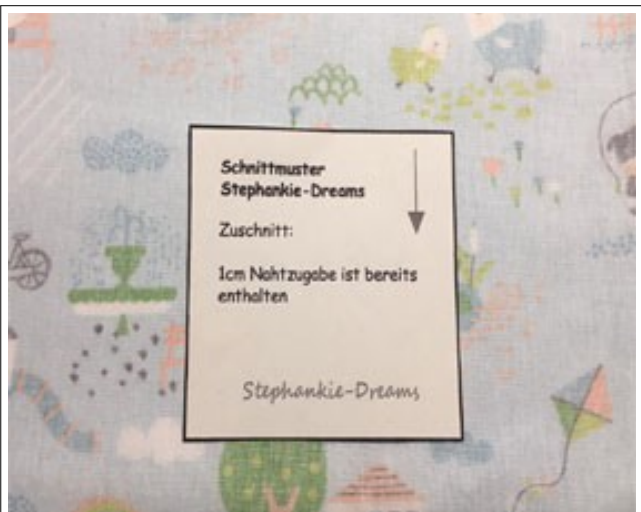
*Stephankie-Dreams*

No liability is assumed for any errors in the instructions

## sewing instructions bunny bag



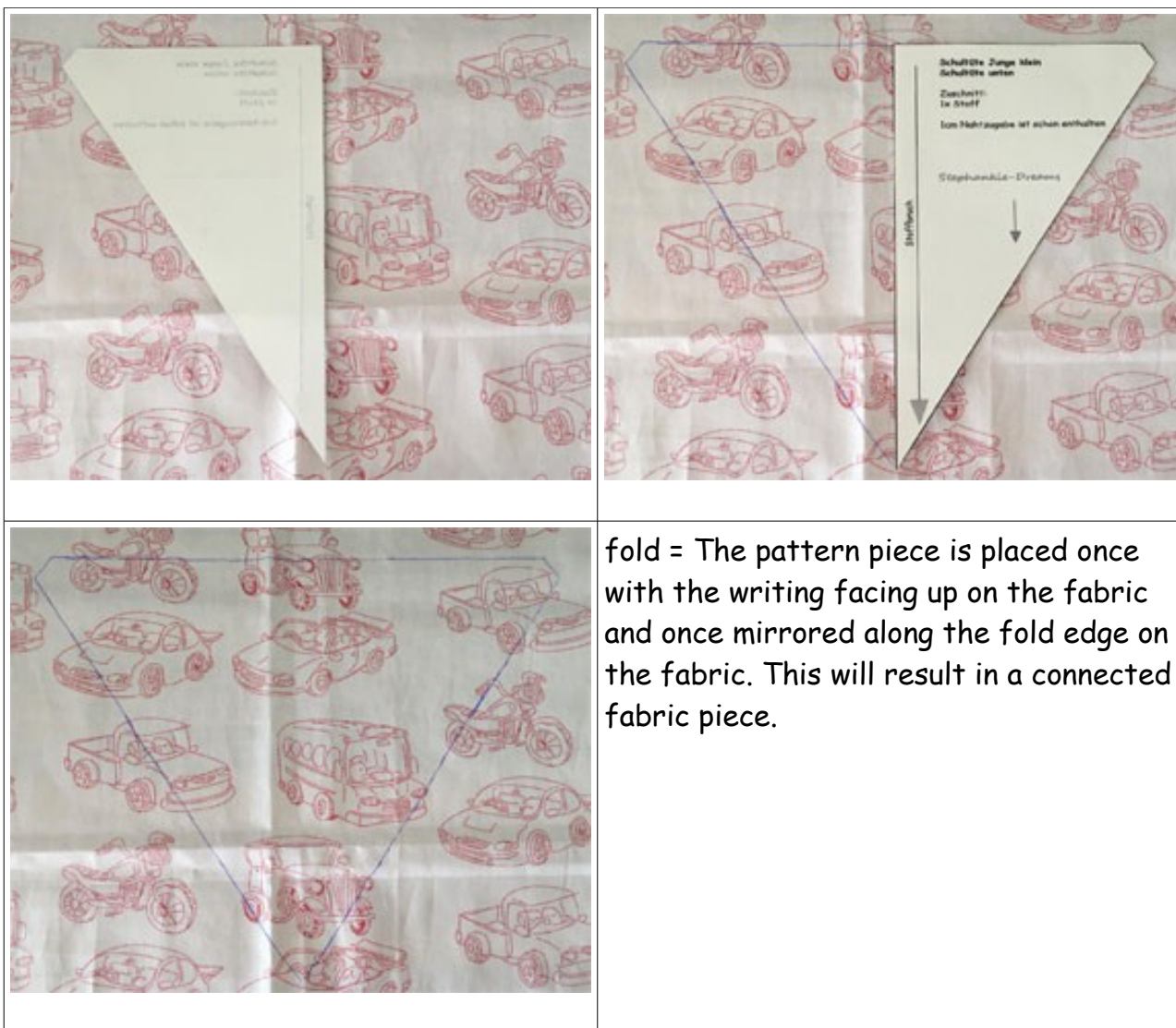
First, cut out all required pattern pieces from fabric, decovil, and fusible interfacing. Then, press all fabric pieces and iron fusible interfacing onto the respective pieces.



The pattern is placed with the writing facing up on the left side of the fabric. Mirror image means the writing is on the fabric side. Here too, it is placed on the left side of the fabric.

*Stephankie-Dreams*

No liability is assumed for any errors in the instructions



### Important Before You Cut the Designs

Each design has a boundary frame around it. This frame must be resized first to ensure the design fits correctly on the Easter egg. Once the frame has the right size, you can break the design into individual parts.

To do this, select the design, go to the Object tab, and choose Release Compound Path. Now, all elements are separate, and you can cut them in different colors. However, make sure not to change the size of the individual pieces.

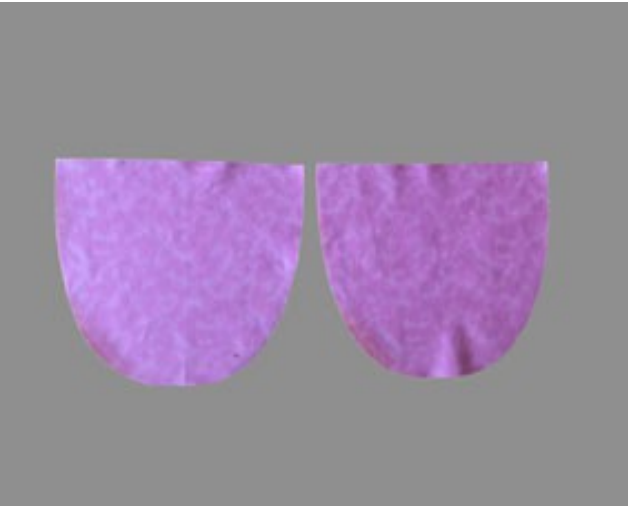
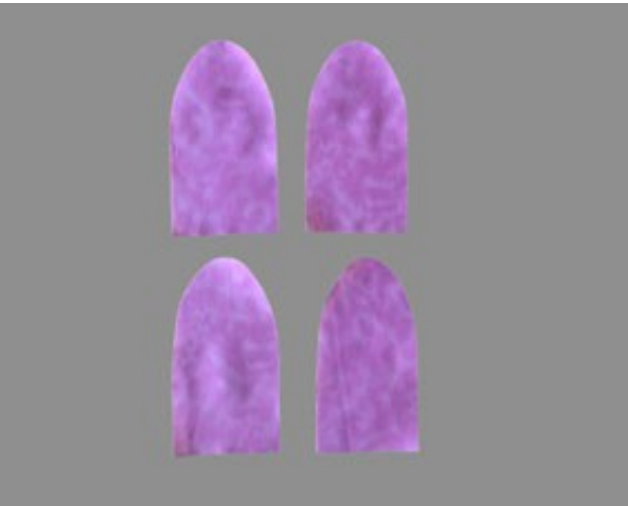

Also, remember to mirror your design if you're cutting it from heat transfer vinyl (HTV). Don't forget to weed the design before pressing it onto the fabric.

The boundary frame for the bunny face must be 5,12 in x 5,12 in.

*Stephankie-Dreams*



No liability is assumed for any errors in the instructions

You now have the following pattern pieces :

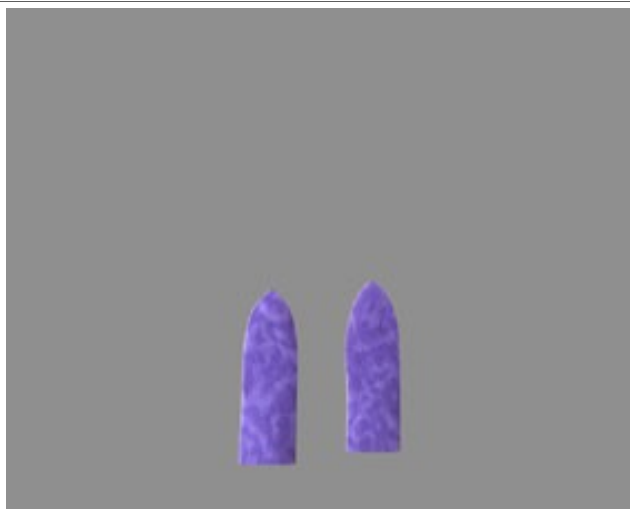
|   |                                      |
|---|--------------------------------------|
|    | from fabric for outside:<br>bag 2x   |
|   | ear outside 4x, 2x of which opposite |
|  | from fabric for inside:<br>bag 2x    |

*Stephankie-Dreams*

No liability is assumed for any errors in the instructions

|  |   |
|--|---|
|   | <p>from Decovil:</p> <p>ear 2x, 1x of which opposite</p> <p>from fabric for ear inside:</p> <p>ear inside 2x fabric, 1x of which opposite</p> <p>2x fusible interfacing, 1x of which opposite</p> |
|  | <p>from flex film:</p> <p>white</p> <p>eyes outside 2x</p> <p>black</p> <p>whiskers 2x</p> <p>mouth 1x</p> <p>eyes inside 2x</p> <p>color for the nose</p> <p>nose 1x</p>                         |

## make from the bunny bag



First, the iron-on interfacing is pressed onto the wrong side of the inner ear fabric.



The Decovil is ironed onto the wrong side of the two outer ear pieces. It is placed directly along the bottom edge of the ear, leaving a 0,28 in fabric border all around.



The bunny face is now ironed onto one of the outer pouch pieces, centered. First, the white outer eyes are pressed on. Position the eyes by placing the entire face on the fabric and adjusting the eyes underneath to the correct position. Then, remove the face again.



Then iron the eyes onto the fabric.

*Stephankie-Dreams*

No liability is assumed for any errors in the instructions



The face is then ironed on top. Please make sure to place baking paper over the vinyl to prevent the already pressed designs from melting.



Finally, the nose is ironed on.



Sew the inner ear onto an outer ear using an appliqué stitch. Use an outer ear that has been reinforced with Decovil.



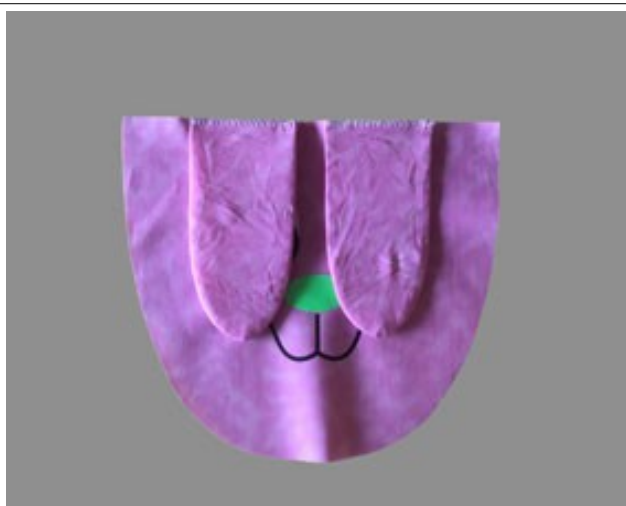
Place the corresponding outer ear, which has not been reinforced with Decovil, on top of the ear you just created. The fabrics should be placed right sides together. Sew along the marking to join them.



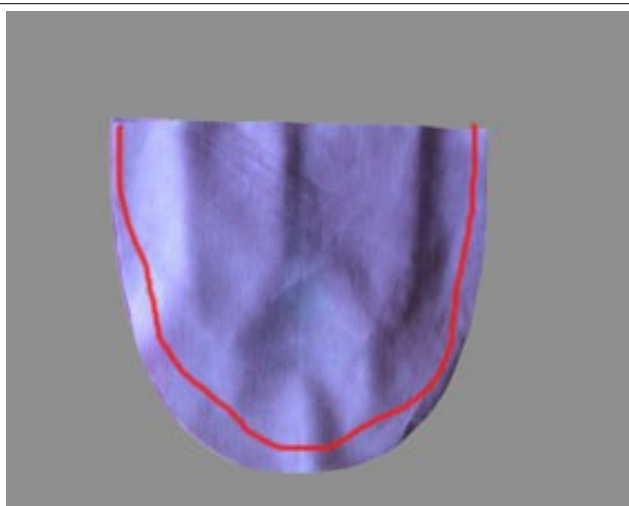
Turn the ear right side out and close the bottom opening with a narrow zigzag stitch.



Sew the second ear together in the same way.



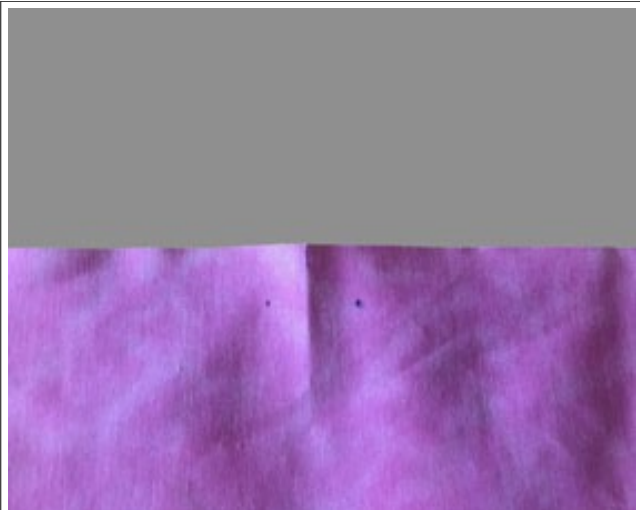
Measure the center of the pouch where the face is located. Then measure 0,2 in to the left and place one ear there. Measure 0,2 in to the right and place the second ear there. There should now be a 0,39 in gap between the ears. The ears should be placed with the inner ear facing the fabric. Sew the ears onto the pouch with a narrow seam.



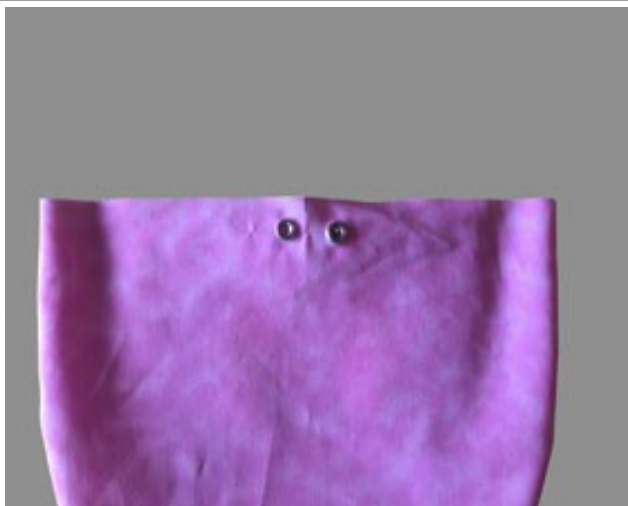
Place both outer pouch pieces right sides together. Sew them along the marking.



Turn the pouch so that the right side of the fabric is facing outward.



Now, attach the eyelets. First, mark the center on the back part of the pouch. Use a washable pen for this. Then, measure 0,39 in to the left and right. From these points, measure 0,59 in down and mark a point at each of these locations.



Cut the fabric at the two marked points just enough so that the eyelets can be inserted but do not slip through. Attach the two eyelets to the fabric.



Place the two inner pouch pieces right sides together. Sew them along the marking, making sure to leave an opening on one side for turning.



Place both pouches in front of you. The outer pouch should have the right side of the fabric facing outward, while the inner pouch should have the wrong side of the fabric facing outward.



Pull the inner pouch over the outer pouch so that the right sides of the fabrics are facing each other. Make sure the side seams of both pouches align. Switch to a zipper foot to ensure you can sew past the eyelets. Sew the upper edge of both pouches together along the marking, all the way around.



Turn the pouch right side out through the opening. Then, sew along the upper edge with a narrow seam.



Leave the part with the eyelets out while sewing along the upper edge.



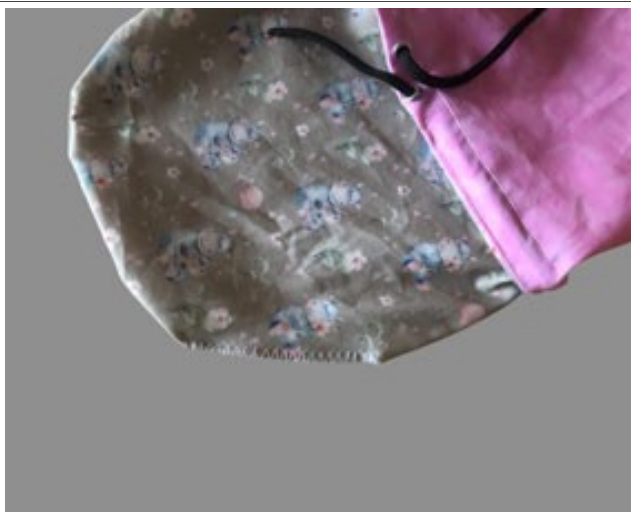
Pull the inner pouch out. Then, thread both ends of the cord through the eyelets from the inside. To do this, go through the turning opening so you can reach the eyelets from the inside.



Place the inner pouch back into the outer pouch. Lay the cord around the upper edge of the pouch and secure it with fabric clips so it doesn't slip. Make sure the cord is positioned between the outer and inner pouches. Sew just below the cord all the way around, through both layers of fabric.



A tunnel for the cord has now been sewn.



Switch back to your regular sewing foot. Pull the inner pouch out again. Fold the fabric of the turning opening inward by 0,28 in. Then, sew the opening closed with a zigzag stitch. Finally, place the inner pouch back into the outer pouch.



If you've made it this far, you can be happy. Your bunny bag is finished.



You can now use the cord to close your pouch.

## Sewing Pattern "Bunny bag Benni"

pattern pieces for bunny bag

Control Square

2 in x 2 in



= grainline

### Bunny bag Benni bag

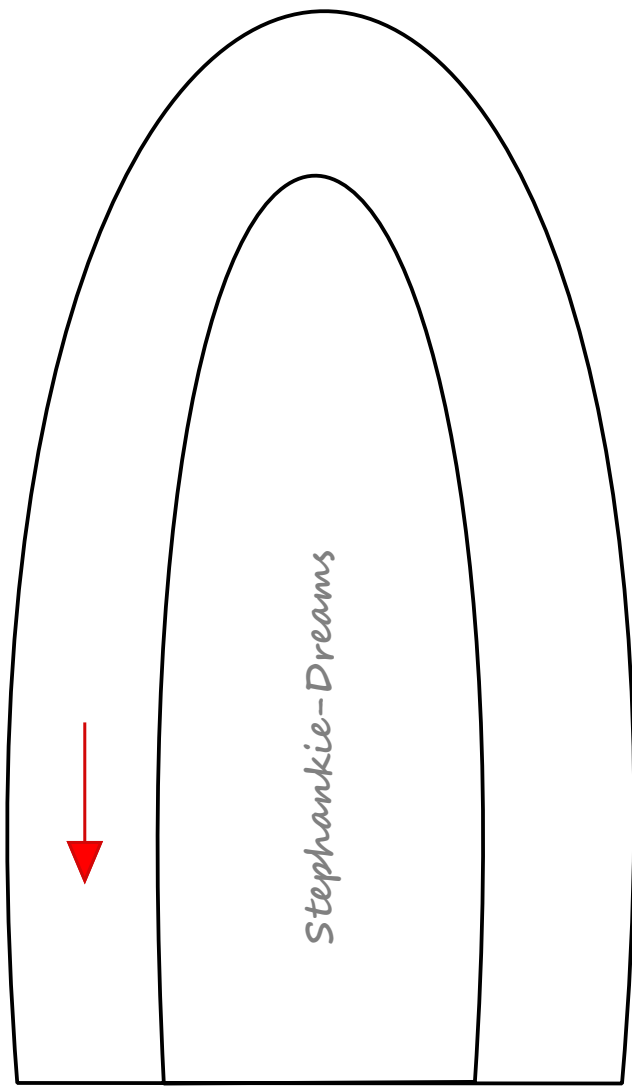
cut 2x fabric from outside on fold  
cut 2x fabric from inside on fold

0,28 in seam allowance included

fold



*Stephankie-Dreams*



### Bunny bag Benni

ear outside

cut 4x fabric, 2x of which opposite

0,28 in seam allowance included

### Bunny bag Benni

ear inside

cut 2x fabric, 1x of which opposite

cut 2x fusible interfacing,

1x of which opposite

0,28 in seam allowance included

